

CLEVELAND KEL-TSH SERIES

ELECTRIC TILTING STEAM KETTLES

Cleveland 150lt and 225lt Electric Tilting Kettle, 889mm rim height, type 304 stainless steel and supports, fully steam jacketed, 50psi steam jacket rating, 3 phase, splash proof solid state temperature controls. All exterior surfaces are stainless steel.

Model: **KEL-40TSH (150lt capacity)**
KEL-60TSH (225lt capacity)



STANDARD FEATURES

- 50 psi safety valve
- Water resistant controls, splash-proof construction
- 41mm O.D. tri-leg supports with level adjustable feet for floor bolting
- Self-contained, easily installed - needs only an electrical hook-up
- Steam jacket filled with treated water, venting and/or refilling is not required
- Re-inforced rolled rim design prevents damage to kettle rim, eliminates "bar rim designs"
- Welded-in heating elements, (holds vacuum better, won't leak or loose water)
- Easily cleaned: kettle and all exterior surfaces are of type 304 stainless steel with an #4 finish
- 50 psi steam jacket rating for higher cooking temperatures
- Solid state water level control (no sight glass gauge to break or leak)
- Tilt mechanism of roller bearings and case hardened self-locking worm and segment gear
- Accurate, consistant solid state temperature controls (mechanical thermostate not as accurate) - less than $\pm 1^{\circ}\text{C}$ variance (ideal for simmering). Operating temperature range from 145° - 260°F (63°C - 127°C) Control panel includes: LED indicator for heat cycle, LED indicator for low water, Power ON/OFF switch, Adjustable temperature control dial
- Rear mounted easy access pressure gauge and pressure relief valve to prevent tampering. Color coded easy to read pressure gauge with "green" and "vent air zone"
- Splash proof element cover with a double gasket seal
- Large pouring lip for high capacity and chunky products

OPTIONAL FEATURES

- 316 Stainless Steel Liner (316)
- Kettle Markings (KM)
- Lift Off Cover (CL)
- Measuring Strip (MS)
- Drain Strainer (DS)
- Pan Carrier (PCK)
- Kettle Accessory Kit (KAK)
- Correctional Packages
- Hot and cold water faucet (DPK), or cold water (SPK). Requires faucet bracket (FBKT)
- 2" Tangent Draw-Off (TD2) (available in 40 gallon only)
- Spring Assist Cover (CHS)
- Basket Strainer (BS)
- Food Strainer (FS)
- Steam Control Kit (SCK1)
- Tri-Basket Strainer Support Systems (TBS)
- Flow Diverter (FD)
- Heat Deflector Shield (HS001)

SPECIFICATIONS ARE SUBJECT TO CHANGE WITHOUT NOTICE.

From the world of Comcater!

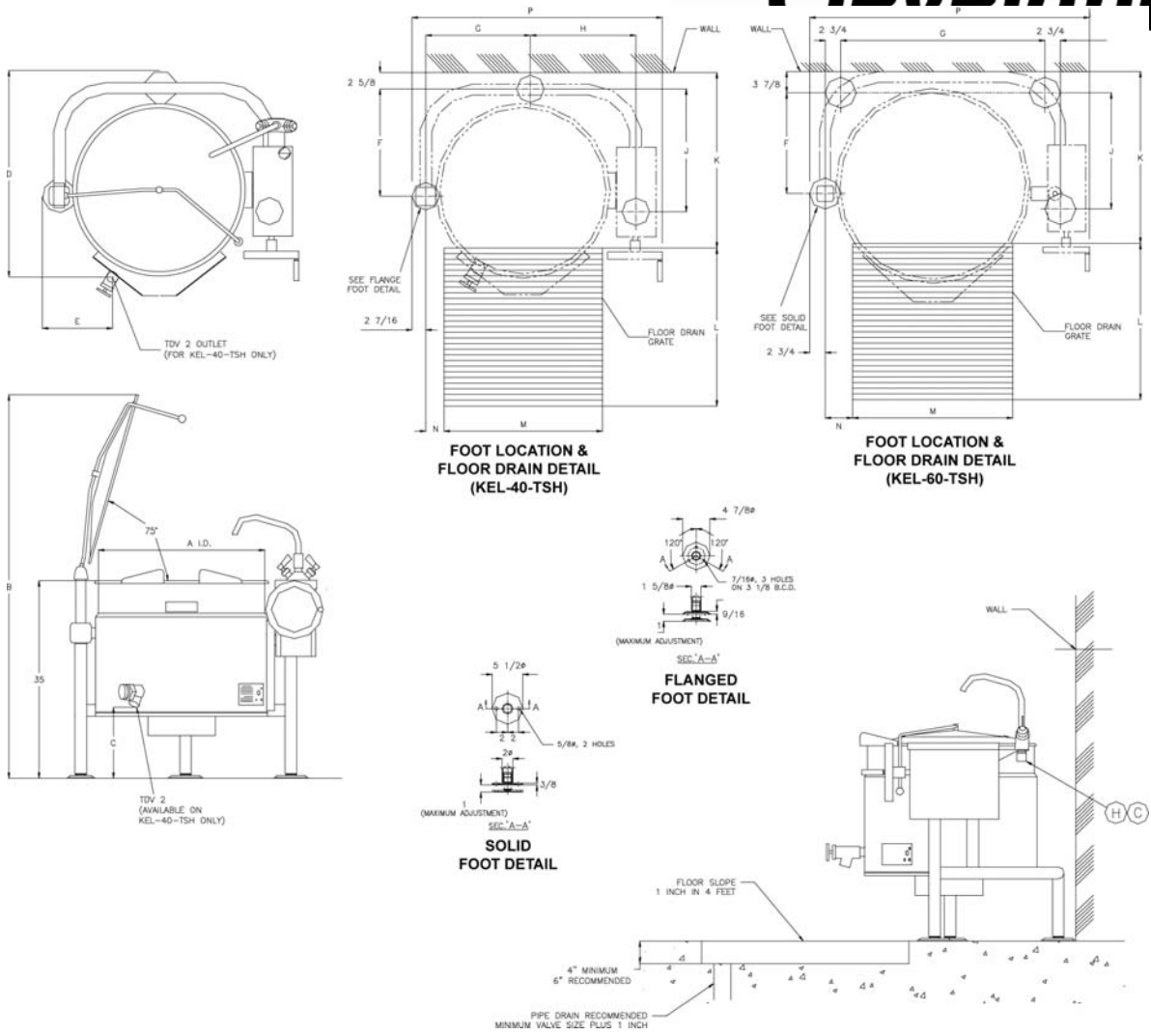
National Head Office
 156 Swann Drive
 Derrimut VIC 3030
 Tel: +61 3 8369 4600
 Fax: +61 3 8369 4695

Melbourne
 96-100 Tope Street,
 South Melbourne VIC 3205
 Tel: +61 3 8369 4600
 Fax: +61 2 8699 1299

Sydney
 20/4 Avenue of the Americas
 Newington, NSW 2127
 Tel: +61 2 9748 3000
 Fax: +61 2 9 648 4762

Brisbane
 1/62 Borthwick Avenue
 Murarrie QLD 4172
 Tel: +61 7 3399 3122
 Fax: +61 7 3399 5311

CLEVELAND KEL-TSH SERIES



DIMENSIONS (mm)

LITRES	A	B	C	D	E	F	G	H	J	K	L	M	N	P
150	749	1734	337	940	260	483	471	474	552	737	711	711	83	1143
225	838	1797	241	-	-	546	289	-	616	851	762	762	101	1232

TECHNICAL DATA

Power Supply	415V, 3 Phase, 25.1amp
Power Output	18kW

SPECIFICATIONS ARE SUBJECT TO CHANGE WITHOUT NOTICE.



www.comcater.com.au

PROUDLY DISTRIBUTED BY: