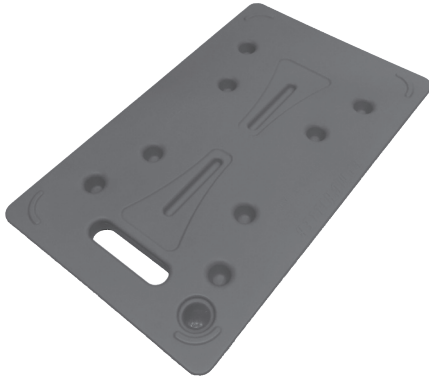


OWNER'S MANUAL

CAMBRO® Camchiller®

This owner's manual applies to all of the following product models: CP3253



Para español, por favor visite el portal de Cambro en www.cambro.com
Pour la version française, veuillez consulter le site Web de Cambro www.cambro.com
Per la versione italiana consultate il sito di Cambro: www.cambro.com
Für Deutsch besuchen Sie bitte die Cambro Website www.cambro.com
Informacje po polsku znajdują się na stronie www.cambro.com
Türkçe için lütfen www.cambro.com adresindeki Cambro web sitesini ziyaret ediniz.
Материалы на русском языке см. на сайте фирмы Cambro по адресу www.cambro.com
日本語版をご希望の方は、キャンブロのウェブサイト www.cambro.com をご覧ください
如需中文, 请浏览金宝的网站 www.cambro.com

For use with the following products:

All Cam GoBox Carriers: EPP160, EPP180, EPP180S, EPP300, EPP400

The following Cambro® Insulated Carriers:

Front-Loading: 300MPC, UPC300, UPC400, UPSC400, UPC600, UPC800, UPC1200, UPC1600, 1318MTC, all Combo Cart® models.

Top-Loading: UPCSS160

Camkiosk®: All models

Camcruisers®: CVC72, CVC724

Table of Contents

I. Introduction	1
II. Safety Instructions	2
III. Usage	2
IV. Care and Maintenance	2
V. Cambro Warranty and Product Liability	2

I. Introduction

Congratulations on the purchase of your new Cambro Camchiller. It is designed to help pre-chill your insulated transporter before placing cold food into it, or to extend the cold holding time of your cold food. This Owner's Manual provides you with a step-by-step guide to using and maintaining it for many years to come.

If you have any further questions, please do not hesitate to contact your Cambro Sales Representative, visit our Web site at www.cambro.com or call our Customer Service Department at 800 833 3003.

CAMBRO
TRUSTED FOR GENERATIONS™

www.cambro.com

II. Safety Instructions

IMPORTANT: Read all instructions prior to use and save for future reference.

Caution! Once frozen, Camchillers are sensitive to shock so please handle carefully.

Caution! Do not open the plug.

III. Usage

Cambro Camchillers® are an easy to use cold temperature maintenance tool that offers a safe and cost effective way to pre-chill food holding cabinets and hold cold foods at safe temperatures for hours.

Get the best performance from your Camchiller:

Prior to use, place Camchiller flat inside freezer overnight or for at least 8 hours.

Freezer temperature should be 0°F (-17,7°C) or colder. (Product capable of freezing to -23.8°F/ -31°C)

1. Slide the Camchiller onto the top rails of the food pan carrier.
2. Load pre-chilled food in food pans on the cabinet rails below Camchiller.
3. As food pans are removed, move the Camchiller down inside the cabinet to minimize cabinet space and maximize temperature retention of cold food.

Tip!

In order to get the best cold holding performance from your carrier, use the Camchiller to pre-chill it before loading with cold food. To do so, place the Camchiller into your carrier and close the lid or door for 20 minutes before loading with cold food. This will extend the cold holding time.

IV. Care and Maintenance

Use a soft cloth with hot water and a mild detergent for cleaning. Do not use abrasives or solvents to clean. Also dishwasher safe. However, do not place frozen Camchiller in dishwasher—must be near room temperature.

V. Cambro Warranty and Product Liability

Cambro warrants to the original buyer that if a product proves defective:

1. Within 1 year from the date of manufacture, Cambro will replace the product free of charge; or,
2. After 1 year and up to 2 years from the date of manufacture, Cambro will grant a credit of 2/3 off replacement product; or,
3. After 2 years and up to 3 years from the date of manufacture, Cambro will grant a credit of 1/3 of the original price towards a replacement product.

ABUSE OR MISUSE WILL VOID THIS WARRANTY

In the event of a defective product, your Cambro Sales Representative will collect appropriate information, such as date of manufacture and invoice information for warranty process. With proof of purchase to the original owner, Cambro Manufacturing will replace the product to the original owner.

NOTE: Your Cambro Sales Representative will determine if the product should be returned for inspection before issuing credit.



CAMBRO U.S.A.
TEL: (714) 848-1555
FAX: (714) 230-4375
international@Cambro.com

CAMBRO EUROPEAN LOGISTICS
TEL: (49) 7022 90 100 0
FAX: (49) 7022 90100 19
CambroEurope@Cambro.com

CAMBRO NORTH IRELAND & UK
TEL: 0800 587 0057 Toll Free
FAX: 0845 280 3411
Cambrouk@Cambro.com

CAMBRO IRELAND
TEL: 1800 509 046 Toll Free
FAX: 01 633 55 76
Cambroireland@Cambro.com

