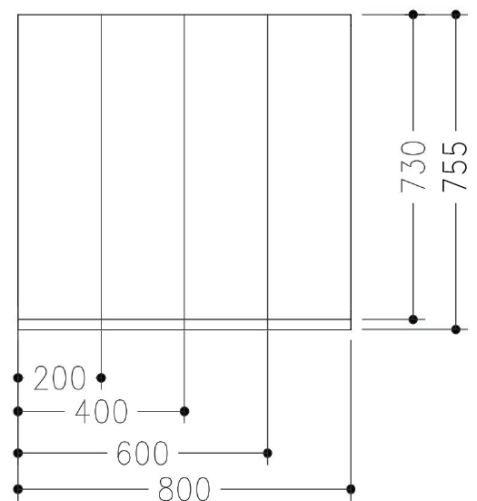
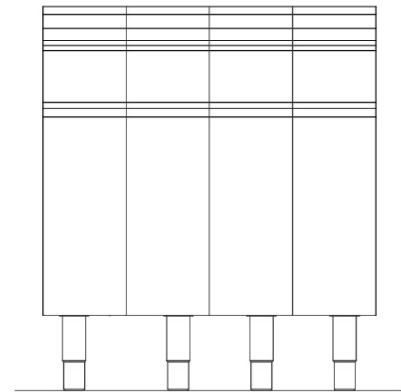
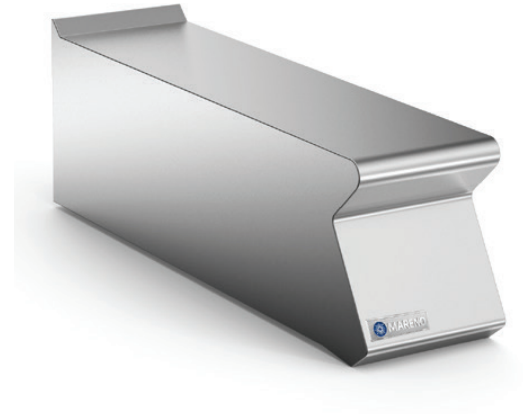


Neutral top unit without drawer, constructed in AISI 304 stainless steel, 1.5 mm thick top. Worktop without flue apertures.

Designed for insertion of water column accessory. Fully sealed underside.



**DIMENSIONS**

730D x 200W x 250H mm

Weight: 10kg

**SHIPPING DATA**

840D x 440W x 550H mm

Shipping Weight: 17kg

SPECIFICATIONS ARE SUBJECT TO CHANGE WITHOUT NOTICE.