

GARLAND MST SERIES

MASTER SERIES COMBINATION TOP RANGE

The MST4S is a gas heated, extra heavy duty range comprising 2 x 36.5mj starfire burners on a storage base.

The MST5S is a gas heated, extra heavy duty range comprising a single front fired hot top on a storage base.

The MST6S is a gas heated, extra heavy duty range comprising a single even heat top on a storage base.

The MST7S is a gas heated, extra heavy duty range comprising a single 433mm wide griddle on a storage base.

Also available:

MST4-T: modular top.

MST5-T: modular top.

MST6-T: modular top.

MST7-T: modular top.



Master Series Model MST4S



Master Series Model MST5S



Master Series Model MST6S



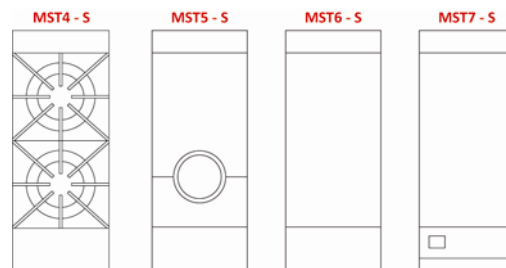
Master Series Model MST7S

STANDARD FEATURES

- Stainless steel front, black finish sides and stainless steel door
- 36.5mj starfire open burner(MST4S)
- 100% flame failure device on all burners
- 150mm high stainless steel legs - adjustable
- 250mm high stainless steel backguard with slotted black enamel angled top
- Extra heavy duty cast iron top and rings grates
- Pilot lights to all open burners
- Storage base interior of aluminized steel
- No Visible screw fixings

OPTIONAL FEATURES

- Stainless steel sides and/or back
- Optional rear gas connection
- Castor mounted
- Plinth mounted
- Flexible gas hose and quick disconnection coupling and restraining device
- Optional common front rails and backguards available at no extra cost
- Electric spark ignition (add suffix E—eg. MST4S-E). (Requires single phase 240V, 50Hz electrical connection)



SPECIFICATIONS ARE SUBJECT TO CHANGE WITHOUT NOTICE.

From the world of Comcater!

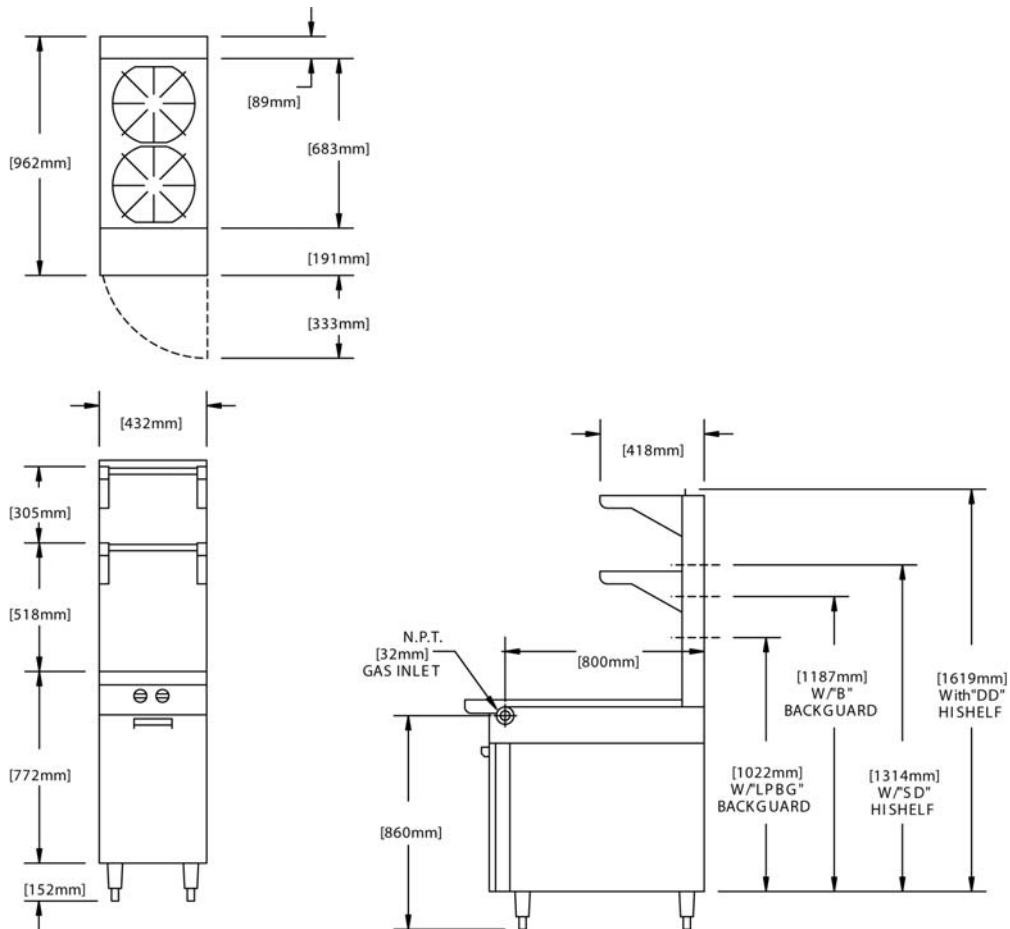
National Head Office
156 Swann Drive
Derrimut VIC 3030
Tel: +61 3 8369 4600
Fax: +61 3 8369 4695

Melbourne
96-100 Tope Street,
South Melbourne VIC 3205
Tel: +61 3 8369 4600
Fax: +61 2 8699 1299

Sydney
20/4 Avenue of the Americas
Newington, NSW 2127
Tel: +61 2 9748 3000
Fax: +61 2 9 648 4762

Brisbane
1/62 Borthwick Avenue
Murarrie QLD 4172
Tel: +61 7 3399 3122
Fax: +61 7 3399 5311

GARLAND MST SERIES



DIMENSIONS

Dimension with storage base:
432W x 965D x 924 mm

Dimension as a modular top:
432W x 965D x 171H mm

TECHNICAL DATA

Gas Type	Natural
Total Energy Rating	73mj (MST4S) 47mj (MST5S) 31mj (MST6S) 35mj (MST7S)
Burner Ratings	36.5mj (Open Burner) 47mj (Hot Top) 31mj (Oven) 35mj (Griddle Top)
AGA Approval Number	SC380 (MST4S) SC381 (MST5S) SC382 (MST6S) SC383 (MST7S)

SPECIFICATIONS ARE SUBJECT TO CHANGE WITHOUT NOTICE.